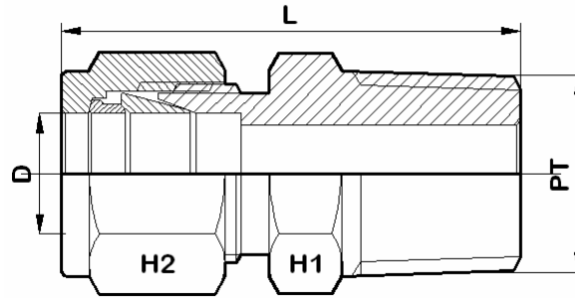


Male Connector - BSPT



For Fractional Tubes

Apurva Code	D (in)	PT (BSPT)	H1 (in)	H2 (in)	L
2 A-MC 2 R	1/8	1/8	7/16	7/16	30.5
2 A-MC 4 R	1/8	1/4	9/16	7/16	35.5
4 A-MC 2 R	1/4	1/8	1/2	9/16	33
4 A-MC 4 R	1/4	1/4	9/16	9/16	38
4 A-MC 6 R	1/4	3/8	11/16	9/16	38.5
4 A-MC 8 R	1/4	1/2	7/8	9/16	44.8
5 A-MC 2 R	5/16	1/8	9/16	5/8	38.6
5 A-MC 4 R	5/16	1/4	9/16	5/8	38.8
6 A-MC 2 R	3/8	1/8	5/8	11/16	41
6 A-MC 4 R	3/8	1/4	5/8	11/16	41
6 A-MC 6 R	3/8	3/8	11/16	11/16	41
6 A-MC 8 R	3/8	1/2	7/8	11/16	46.5
6 A-MC 12 R	3/8	3/4	1-1/16	11/16	47.8
8 A-MC 4 R	1/2	1/4	13/16	7/8	43.5
8 A-MC 6 R	1/2	3/8	13/16	7/8	43.5
8 A-MC 8 R	1/2	1/2	7/8	7/8	49
8 A-MC 12 R	1/2	3/4	1-1/16	7/8	50.5
10 A-MC 6 R	5/8	3/8	15/16	1	44.2
10 A-MC 8 R	5/8	1/2	15/16	1	49
10 A-MC 12 R	5/8	3/4	1-1/16	1	50.5
12 A-MC 8 R	3/4	1/2	1-1/16	1-1/8	50.5
12 A-MC 12 R	3/4	3/4	1-1/16	1-1/8	50.5
12 A-MC 16 R	3/4	1	1-3/8	1-1/8	57.2
14 A-MC 12 R	7/8	3/4	1-3/16	1-1/4	51
14 A-MC 16 R	7/8	1	1-3/8	1-1/4	57.2
16 A-MC 8 R	1	1/2	1-3/8	1-1/2	57.5
16 A-MC 12 R	1	3/4	1-3/8	1-1/2	57.5
16 A-MC 16 R	1	1	1-3/8	1-1/2	62.2



where quality matters

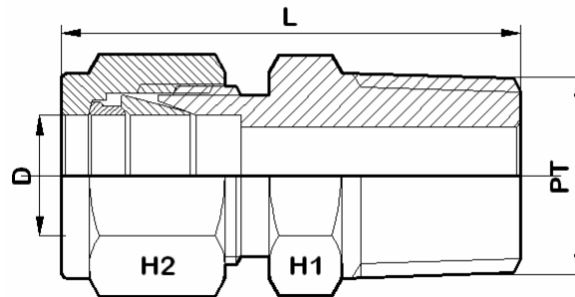
APURVA ENTERPRISES

7, Vijay Estate, Rajawadi, Ghatkopar (E),
Mumbai - 400077, Maharashtra, India.

Ph. No.:- 91-022-2344 3348 Fax:- 91-022-2341 4216.

E-mail:- apurvaenterprises@gmail.com
apurvaenterprises@hotmail.com

Male Connector - BSPT



For Metric Tubes

Apurva Code	D	PT (BSPT)	H1	H2	L
2M A-MC 2 R	2	1/8	12	12	30.5
3M A-MC 2 R	3	1/8	12	12	30.5
3M A-MC 4 R	3	1/4	14	12	35.5
4M A-MC 2 R	4	1/8	12	12	31.2
4M A-MC 4 R	4	1/4	14	12	36.4
6M A-MC 2 R	6	1/8	14	14	33
6M A-MC 4 R	6	1/4	14	14	38
6M A-MC 6 R	6	3/8	18	14	38.5
6M A-MC 8 R	6	1/2	22	14	44.5
8M A-MC 4 R	8	1/4	15	16	38.7
8M A-MC 6 R	8	3/8	17	16	39.2
8M A-MC 8 R	8	1/2	22	16	45.5
10M A-MC 2 R	10	1/8	18	19	36.3
10M A-MC 4 R	10	1/4	18	19	41
10M A-MC 6 R	10	3/8	18	19	41
10M A-MC 8 R	10	1/2	22	19	46.5
12M A-MC 4 R	12	1/4	22	22	43.5
12M A-MC 6 R	12	3/8	22	22	43.5
12M A-MC 8 R	12	1/2	22	22	49
12M A-MC 12 R	12	3/4	27	22	50.5
15M A-MC 8 R	15	1/2	24	25	49
16M A-MC 6 R	16	3/8	24	25	44
16M A-MC 8 R	16	1/2	24	25	49
16M A-MC 12 R	16	3/4	27	25	49
18M A-MC 8 R	18	1/2	27	30	50.5
18M A-MC 12 R	18	3/4	27	30	50.5
20M A-MC 8 R	20	1/2	30	32	52.3
20M A-MC 12 R	20	3/4	30	32	52.3
20M A-MC 16 R	20	1	35	32	58
22M A-MC 12 R	22	3/4	30	32	52.3
22M A-MC 16 R	22	1	35	32	58
25M A-MC 12 R	25	3/4	35	38	57.5
25M A-MC 16 R	25	1	35	38	62.3

* Dimensions are in mm, unless otherwise specified. Dimensions for reference only and are subject change without.