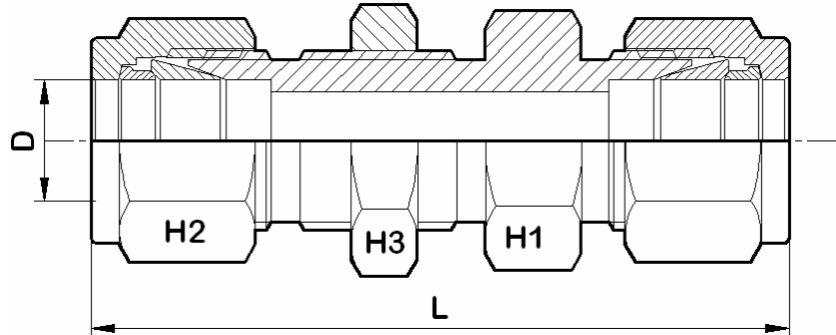


**Bulkhead Union**



**For Fractional Tubes**

Apurva Code	D (in)	H1 (in)	H2 (in)	H3 (in)	L
1 A-RU	1/16	5/16	5/16	5/16	31.5
2 A-RU	1/8	1/2	7/16	1/2	51.5
3 A-RU	3/16	9/16	1/2	9/16	53.6
4 A-RU	1/4	5/8	9/16	5/8	57.7
5 A-RU	5/16	11/16	5/8	11/16	60.7
6 A-RU	3/8	3/4	11/16	3/4	62.3
8 A-RU	1/2	15/16	7/8	15/16	71.2
10 A-RU	5/8	1-1/16	1	1	72.7
12 A-RU	3/4	1-3/16	1-1/8	1-3/16	79
14 A-RU	7/8	1-3/8	1-1/4	1-3/8	84.6
16 A-RU	1	1-5/8	1-1/2	1-5/8	95.8

**For Metric Tubes**

Apurva Code	D	H1	H2	H3	L
3M A-RU	3	14	12	12.7	31.2
4M A-RU	4	14	12	14	32
6M A-RU	6	16	14	16	33.6
8M A-RU	8	18	16	18	36
10M A-RU	10	22	19	22	37
12M A-RU	12	24	22	24	42
15M A-RU	15	27	25	27	42.6
16M A-RU	16	27	25	27	42.6
18M A-RU	18	30	30	30	47.5
20M A-RU	20	35	32	35	53
22M A-RU	22	35	32	35	53
25M A-RU	25	42	38	42	57.5