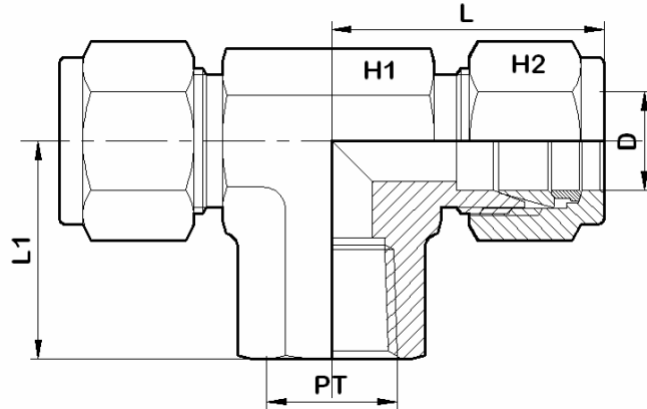


Female Branch Tee



For Fractional Tubes

Apurva Code	D (in)	PT* (NPT)	H1 (in)	H2 (in)	L	L1
2 A-FBT 2 N	1/8	1/8	9/16	7/16	24.5	19
4 A-FBT 2 N	1/4	1/8	9/16	9/16	26.9	19
4 A-FBT 4 N	1/4	1/4	11/16	9/16	29.7	22.3
6 A-FBT 4 N	3/8	1/4	11/16	11/16	31.2	22.3
8 A-FBT 6 N	1/2	3/8	13/16	7/8	36	22.3
8 A-FBT 8 N	1/2	1/2	7/8	7/8	39.8	28.4
12 A-FBT 12 N	3/4	3/4	1-1/16	1-1/8	44.7	31.7
16 A-FBT 16 N	1	1	1-11/16	1-1/2	50.3	38

For Metric Tubes

Apurva Code	D	PT* (NPT)	H1	H2	L	L1
3M A-FBT 2 N	3	1/8	14	12	23.6	19
6M A-FBT 2 N	6	1/8	14	14	27	19
6M A-FBT 4 N	6	1/4	17.5	14	27	22.3
6M A-FBT 8 N	6	1/2	12.5	14	34.6	28.4
8M A-FBT 2 N	8	1/8	14	16	29.9	19
8M A-FBT 4 N	8	1/4	15	16	30.6	22.3
8M A-FBT 6 N	8	3/8	14	16	32.7	22.3
8M A-FBT 8 N	8	1/2	15	16	35.5	28.4
12M A-FBT 4 N	12	1/4	20.5	22	36	22.3
12M A-FBT 6 N	12	3/8	20.5	22	36	22.3
12M A-FBT 8 N	12	1/2	22	22	39.8	28.4
16M A-FBT 8 N	16	1/2	24	25	39.8	28.4
20M A-FBT 12 N	20	3/4	32	32	44	32
25M A-FBT 16 N	25	1	42	38	54.5	38

* ISO Tapered Pipe Threads are available on request.