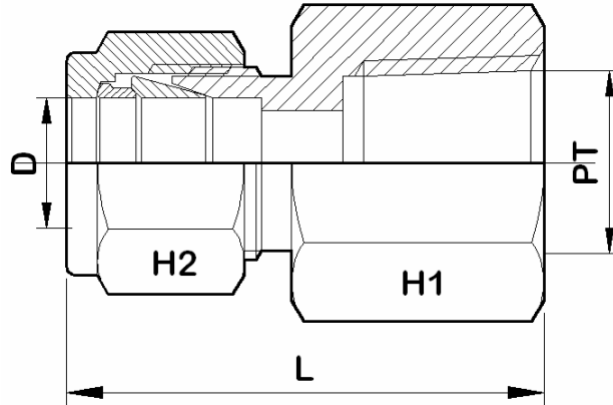


Female Connector - BSPT



For Fractional Tubes

Apurva Code	D (in)	PT (BSPT)	H1 (in)	H2 (in)	L
1 A-FC 1 N	1/16	1/16	7/16	5/16	23.7
1 A-FC 2 R	1/16	1/8	9/16	5/16	24.5
2 A-FC 2 R	1/8	1/8	9/16	7/16	28.7
2 A-FC 4 R	1/8	1/4	3/4	7/16	33.5
3 A-FC 2 R	3/16	1/8	9/16	1/2	30
4 A-FC 2 R	1/4	1/8	9/16	9/16	31.5
4 A-FC 4 R	1/4	1/4	3/4	9/16	36
4 A-FC 6 R	1/4	3/8	7/8	9/16	37.6
4 A-FC 8 R	1/4	1/2	1-1/16	9/16	42.5
5 A-FC 2 R	5/16	1/8	9/16	5/8	32
5 A-FC 4 R	5/16	1/4	3/4	5/8	37
6 A-FC 2 R	3/8	1/8	5/8	11/16	32.8
6 A-FC 4 R	3/8	1/4	3/4	11/16	37.6
6 A-FC 6 R	3/8	3/8	7/8	11/16	39.2
6 A-FC 8 R	3/8	1/2	1-1/16	11/16	44
6 A-FC 12 R	3/8	3/4	1-5/16	11/16	47.8
8 A-FC 4 R	1/2	1/4	7/8	7/8	40.5
8 A-FC 6 R	1/2	3/8	7/8	7/8	42
8 A-FC 8 R	1/2	1/2	1-1/16	7/8	46.8
8 A-FC 12 R	1/2	3/4	1-5/16	7/8	48.3
10 A-FC 6 R	5/8	3/8	15/16	1	42
10 A-FC 8 R	5/8	1/2	1-1/16	1	46.8
10 A-FC 12 R	5/8	3/4	1-5/16	1	48.3
12 A-FC 8 R	3/4	1/2	1-1/16	1-1/8	46.8
12 A-FC 12 R	3/4	3/4	1-5/16	1-1/8	48.3
14 A-FC 12 R	7/8	3/4	1-5/16	1-1/4	49.8
16 A-FC 12 R	1	3/4	1-3/8	1-1/2	53.4
16 A-FC 16 R	1	1	1-5/8	1-1/2	62.2



where quality matters

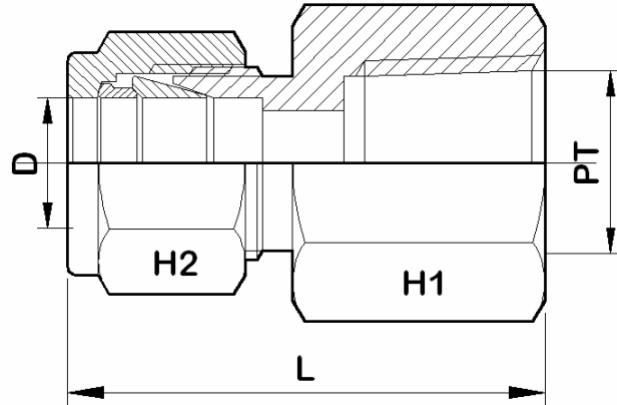
APURVA ENTERPRISES

7, Vijay Estate, Rajawadi, Ghatkopar (E),
Mumbai - 400077, Maharashtra, India.

Ph. No.:- 91-022-2344 3348 Fax:- 91-022-2341 4216.

E-mail:- apurvaenterprises@gmail.com
apurvaenterprises@hotmail.com

Female Connector - BSPT



For Metric Tubes

Apurva Code	D	PT (BSPT)	H1	H2	L
3M A-FC 2 R	3	1/8	14	12	28.8
3M A-FC 4 R	3	1/4	19	12	33.5
4M A-FC 2 R	4	1/8	14	12	29.7
4M A-FC 4 R	4	1/4	19	12	34.5
6M A-FC 2 R	6	1/8	14	14	31.5
6M A-FC 4 R	6	1/4	19	14	35.8
6M A-FC 6 R	6	3/8	22	14	37
6M A-FC 8 R	6	1/2	27	14	42.5
8M A-FC 4 R	8	1/4	19	16	37
8M A-FC 6 R	8	3/8	22	16	37.8
8M A-FC 8 R	8	1/2	27	16	43.5
10M A-FC 2 R	10	1/8	18	19	33
10M A-FC 4 R	10	1/4	19	19	37.8
10M A-FC 6 R	10	3/8	22	19	38.6
10M A-FC 8 R	10	1/2	27	19	44.2
12M A-FC 4 R	12	1/4	22	22	40.5
12M A-FC 6 R	12	3/8	22	22	41
12M A-FC 8 R	12	1/2	27	22	46.7
12M A-FC 12 R	12	3/4	35	22	49
15M A-FC 8 R	15	1/2	27	24	46.7
16M A-FC 8 R	16	1/2	27	24	47
18M A-FC 12 R	18	3/4	35	27	48.5
20M A-FC 8 R	20	1/2	30	32	48
20M A-FC 12 R	20	3/4	35	32	49.8
20M A-FC 16 R	20	1	41	32	54
22M A-FC 12 R	22	3/4	35	32	49.8
22M A-FC 16 R	22	1	41	32	54
25M A-FC 12 R	25	3/4	35	38	53.5
25M A-FC 16 R	25	1	41	38	62.5