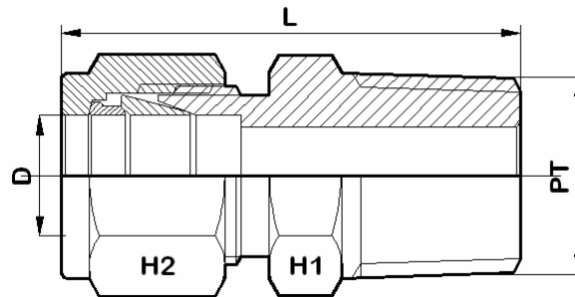


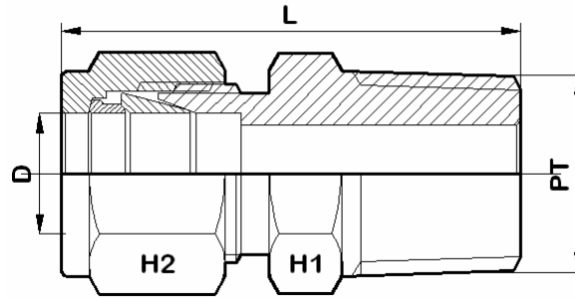
## Male Connector - NPT



### For Fractional Tubes

Apurva Code	D (in)	PT (NPT)	H1 (in)	H2 (in)	L
1 A-MC 1 N	1/16	1/16	5/16	5/16	24
1 A-MC 2 N	1/16	1/8	7/16	5/16	26.5
2 A-MC 2 N	1/8	1/8	7/16	7/16	30.5
2 A-MC 4 N	1/8	1/4	9/16	7/16	35.5
2 A-MC 6 N	1/8	3/8	11/16	7/16	35.8
3 A-MC 2 N	3/16	1/8	7/16	1/2	31.5
3 A-MC 4 N	3/16	1/4	9/16	1/2	36.5
4 A-MC 2 N	1/4	1/8	1/2	9/16	32.8
4 A-MC 4 N	1/4	1/4	9/16	9/16	38
4 A-MC 6 N	1/4	3/8	11/16	9/16	38.4
4 A-MC 8 N	1/4	1/2	7/8	9/16	44.7
5 A-MC 4 N	5/16	1/4	9/16	5/8	38.6
5 A-MC 6 N	5/16	3/8	11/16	5/8	39
6 A-MC 4 N	3/8	1/4	5/8	11/16	40
6 A-MC 6 N	3/8	3/8	11/16	11/16	40
6 A-MC 8 N	3/8	1/2	7/8	11/16	46.2
6 A-MC 12 N	3/8	3/4	1-1/16	11/16	47.8
8 A-MC 2 N	1/2	1/8	13/16	7/8	39
8 A-MC 4 N	1/2	1/4	13/16	7/8	43.5
8 A-MC 6 N	1/2	3/8	13/16	7/8	43.5
8 A-MC 8 N	1/2	1/2	7/8	7/8	49
8 A-MC 12 N	1/2	3/4	1-1/16	7/8	50.5
8 A-MC 16 N	1/2	1	1-3/8	7/8	57.2
10 A-MC 6 N	5/8	3/8	15/16	1	44.2
10 A-MC 8 N	5/8	1/2	15/16	1	49
10 A-MC 12 N	5/8	3/4	1-1/16	1	50.5
12 A-MC 8 N	3/4	1/2	1-1/16	1-1/8	50.5
12 A-MC 12 N	3/4	3/4	1-1/16	1-1/8	50.5
12 A-MC 16 N	3/4	1	1-3/8	1-1/8	57.2
14 A-MC 12 N	7/8	3/4	1-3/16	1-1/4	50.5
14 A-MC 16 N	7/8	1	1-3/8	1-1/4	57.2
16 A-MC 8 N	1	1/2	1-3/8	1-1/2	57.5
16 A-MC 12 N	1	3/4	1-3/8	1-1/2	57.5
16 A-MC 16 N	1	1	1-3/8	1-1/2	62.2

## Male Connector - NPT



### For Metric Tubes

Apurva Code	D	PT (NPT)	H1	H2	L
2M A-MC 2 N	2	1/8	11	12	29.7
3M A-MC 2 N	3	1/8	11	12	29.7
3M A-MC 4 N	3	1/4	14	12	35.6
4M A-MC 2 N	4	1/8	11	12	31.2
4M A-MC 4 N	4	1/4	14	12	36.3
6M A-MC 2 N	6	1/8	14	14	33
6M A-MC 4 N	6	1/4	14	14	38
6M A-MC 6 N	6	3/8	18	14	38.5
6M A-MC 8 N	6	1/2	22	14	44.7
8M A-MC 4 N	8	1/4	16	16	38.7
8M A-MC 6 N	8	3/8	18	16	39.5
8M A-MC 8 N	8	1/2	22	16	45.5
10M A-MC 2 N	10	1/8	19	19	36.3
10M A-MC 4 N	10	1/4	19	19	41
10M A-MC 6 N	10	3/8	19	19	41
10M A-MC 8 N	10	1/2	22	19	46.5
12M A-MC 4 N	12	1/4	22	22	43.5
12M A-MC 6 N	12	3/8	22	22	43.5
12M A-MC 8 N	12	1/2	22	22	49
12M A-MC 12 N	12	3/4	27	22	50.5
14M A-MC 12 N	14	1/2	24	24	49
15M A-MC 8 N	15	1/2	24	24	49
16M A-MC 6 N	16	3/8	25	24	44
16M A-MC 8 N	16	1/2	25	24	49
16M A-MC 12 N	16	3/4	25	24	50.5
18M A-MC 8 N	18	1/2	27	27	50.5
18M A-MC 12 N	18	3/4	27	27	50.5
20M A-MC 8 N	20	1/2	30	32	52.5
20M A-MC 12 N	20	3/4	30	32	52.5
20M A-MC 16 N	20	1	35	32	57.7
22M A-MC 12 N	22	3/4	30	32	52.5
22M A-MC 16 N	22	1	35	32	57
25M A-MC 12 N	25	3/4	35	38	57.5
25M A-MC 16 N	25	1	35	38	62.5