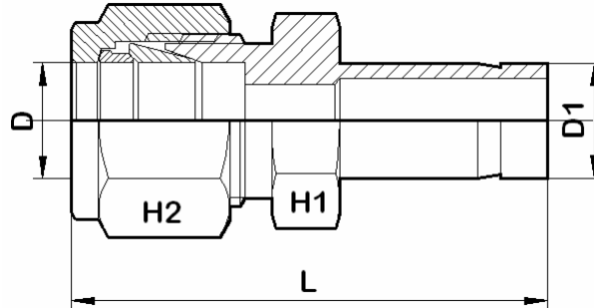


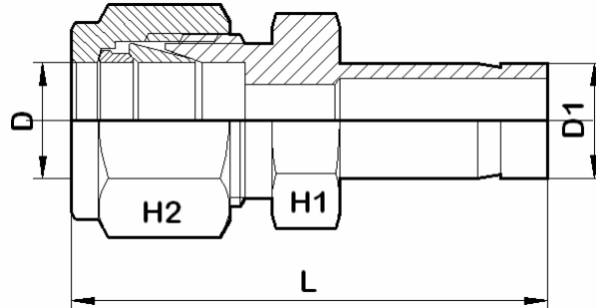
Port Reducer



For Fractional Tubes

Apurva Code	D (in)	D1 (in)	H1 (in)	H2 (in)	L
2 A-PR 1	1/8	1/16	7/16	7/16	29
2 A-PR 2	1/8	1/8	7/16	7/16	33.5
2 A-PR 4	1/8	1/4	7/16	7/16	36
2 A-PR 6	1/8	3/8	7/16	7/16	37.6
2 A-PR 8	1/8	1/2	9/16	7/16	44.5
3 A-PR 2	3/16	1/8	7/16	1/2	35
3 A-PR 4	3/16	1/4	7/16	1/2	37
4 A-PR 2	1/4	1/8	1/2	9/16	37
4 A-PR 4	1/4	1/4	1/2	9/16	39.2
4 A-PR 6	1/4	3/8	1/2	9/16	40.7
4 A-PR 8	1/4	1/2	9/16	9/16	46.3
5 A-PR 6	5/16	3/8	9/16	5/8	42
5 A-PR 8	5/16	1/2	9/16	5/8	47.5
6 A-PR 4	3/8	1/4	5/8	11/16	41.5
6 A-PR 6	3/8	3/8	5/8	11/16	43.2
6 A-PR 8	3/8	1/2	5/8	11/16	48.5
6 A-PR 12	3/8	3/4	13/16	11/16	50.3
8 A-PR 4	1/2	1/4	13/16	7/8	45
8 A-PR 6	1/2	3/8	13/16	7/8	46.8
8 A-PR 8	1/2	1/2	13/16	7/8	52.4
8 A-PR 12	1/2	3/4	13/16	7/8	54
8 A-PR 16	1/2	1	1-1/16	7/8	60.3
10 A-PR 12	5/8	3/4	15/16	1	54.7
10 A-PR 16	5/8	1	1-1/16	1	61
12 A-PR 8	3/4	1/2	1-1/16	1-1/8	54.7
12 A-PR 16	3/4	1	1-1/16	1-1/8	62.5

Port Reducer



For Metric Tubes

Apurva Code	D	D1	H1	H2	L
3M A-PR 4M	3	4	12	12	35
3M A-PR 6M	3	6	12	12	36
3M A-PR 10M	3	10	12	12	38.5
4M A-PR 6M	4	6	12	12	37
6M A-PR 3M	6	3	14	14	37
6M A-PR 8M	6	8	14	14	40
6M A-PR 10M	6	10	14	14	41
6M A-PR 12M	6	12	14	14	46.5
8M A-PR 6M	8	6	15	16	40.5
8M A-PR 10M	8	10	15	16	42
8M A-PR 12M	8	12	15	16	47.6
10M A-PR 6M	10	6	19	19	42.5
10M A-PR 12M	10	12	19	19	50
10M A-PR 15M	10	15	19	19	51.3
10M A-PR 18M	10	18	22	19	51.3
12M A-PR 6M	12	6	22	22	45
12M A-PR 10M	12	10	22	22	47
12M A-PR 16M	12	16	22	22	54
12M A-PR 18M	12	18	22	22	54
12M A-PR 20M	12	20	22	22	56
12M A-PR 25M	12	25	27	22	62.5
16M A-PR 12M	16	12	24	25	53
18M A-PR 16M	18	16	27	30	56.1
18M A-PR 20M	18	20	27	30	57.6
18M A-PR 25M	18	25	27	30	62.5
20M A-PR 16M	20	16	30	32	58
20M A-PR 18M	20	18	30	32	58
20M A-PR 25M	20	25	30	32	64.2
22M A-PR 20M	22	20	30	32	59.5
22M A-PR 25M	22	25	30	32	64.2
25M A-PR 20M	25	20	35	38	64.7

Port Reducers to connect Metric Tube to Fractrional Tube are available on request.

Dimensions are in mm, unless otherwise specified. Dimensions for reference only and are subject change.