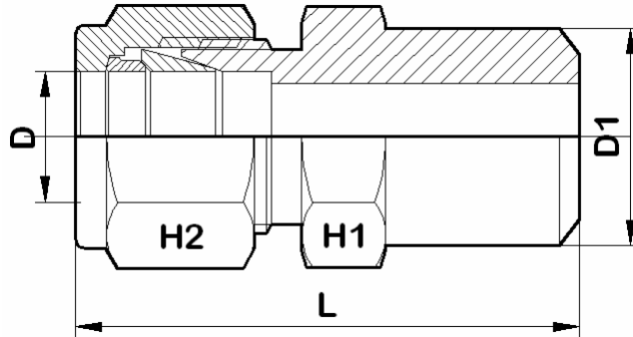


### Pipe Weld Connector



### For Fractional Tubes

Apurva Code	D (in)	PIPE OD (NB) D1 (in)	H1 (in)	H2 (in)	L
2 A-PWC 2NB	1/8	1/8	7/16	7/16	31.5
3 A-PWC 2NB	3/16	1/8	7/16	1/2	31.5
4 A-PWC 2NB	1/4	1/8	1/2	9/16	32.8
4 A-PWC 4NB	1/4	1/4	9/16	9/16	38
5 A-PWC 2NB	5/16	1/8	9/16	5/8	34
5 A-PWC 4NB	5/16	1/4	9/16	5/8	38.6
6 A-PWC 4NB	3/8	1/4	5/8	11/16	40
6 A-PWC 6NB	3/8	3/8	11/16	11/16	40
6 A-PWC 8NB	3/8	1/2	7/8	11/16	43.3
6 A-PWC 12NB	3/8	3/4	1-1/16	11/16	47.8
8 A-PWC 6NB	1/2	3/8	13/16	7/8	43.5
8 A-PWC 8NB	1/2	1/2	7/8	7/8	49
8 A-PWC 12NB	1/2	3/4	1-1/16	7/8	50.54
10 A-PWC 8NB	5/8	1/2	15/16	1	49
12 A-PWC 12NB	3/4	3/4	1-1/16	1-1/8	50.5
16 A-PWC 16NB	1	1	1-3/8	1-1/2	62.3



where quality matters

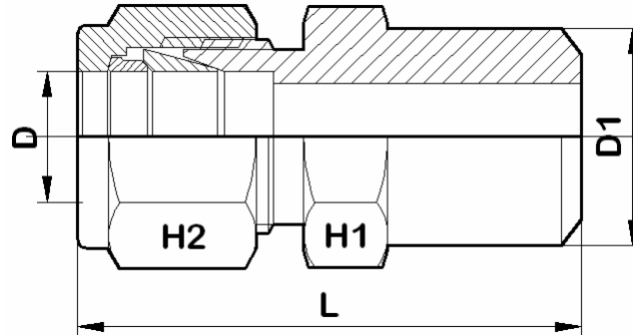
## APURVA ENTERPRISES

7, Vijay Estate, Rajawadi, Ghatkopar (E),  
Mumbai - 400077, Maharashtra, India.

Ph. No.:- 91-022-2344 3348 Fax:- 91-022-2341 4216.

E-mail:- [apurvaenterprises@gmail.com](mailto:apurvaenterprises@gmail.com)  
[apurvaenterprises@hotmail.com](mailto:apurvaenterprises@hotmail.com)

### Pipe Weld Connector



### For Metric Tubes

Apurva Code	D	PIPE OD (NB) D1 (in)	H1	H2	L
3M A-PWC 2NB	3	1/8	12	12	29.7
4M A-PWC 2NB	4	1/8	12	12	30.7
6M A-PWC 2NB	6	1/8	14	14	32.8
6M A-PWC 4NB	6	1/4	14	14	37.6
8M A-PWC 2NB	8	1/8	15	16	34.2
8M A-PWC 4NB	8	1/4	15	16	38.7
8M A-PWC 8NB	8	1/2	22	16	45
10M A-PWC 4NB	10	1/4	18	19	41
10M A-PWC 6NB	10	3/8	18	19	40
10M A-PWC 8NB	10	1/2	22	19	45.7
12M A-PWC 4NB	12	1/4	22	22	43.5
12M A-PWC 6NB	12	3/8	22	22	43.5
12M A-PWC 8NB	12	1/2	22	22	48.2
14M A-PWC 6NB	14	3/8	24	25	44
15M A-PWC 8NB	15	1/2	24	25	49
16M A-PWC 8NB	16	1/2	24	25	49
18M A-PWC 8NB	18	1/2	27	30	50.5

\* Dimensions are in mm, unless otherwise specified. Dimensions for reference only and are subject change without.