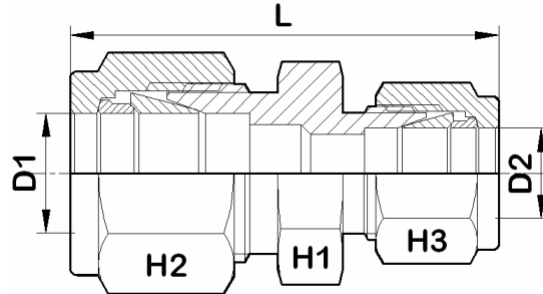


Reducing Union



For Fractional Tubes

Apurva Code	D1 (in)	D2 (in)	H1 (in)	H2 (in)	H3 (in)	L
2 A-RU 1	1/8	1/16	7/16	7/16	5/16	30.9
3 A-RU 1	3/16	1/16	7/16	1/2	5/16	32.2
3 A-RU 2	3/16	1/8	7/16	1/2	7/16	36.5
4 A-RU 1	1/4	1/16	1/2	9/16	5/16	34.2
4 A-RU 2	1/4	1/8	1/2	9/16	7/16	38.6
4 A-RU 3	1/4	3/16	1/2	9/16	1/2	39.3
5 A-RU 2	5/16	1/8	9/16	5/8	7/16	40
5 A-RU 4	5/16	1/4	9/16	5/8	9/16	42.2
6 A-RU 1	3/8	1/16	5/8	11/16	5/16	36.6
6 A-RU 2	3/8	1/8	5/8	11/16	7/16	41
6 A-RU 4	3/8	1/4	5/8	11/16	9/16	43.2
6 A-RU 5	3/8	5/16	5/8	11/16	5/8	44.2
8 A-RU 2	1/2	1/8	13/16	7/8	7/16	45.2
8 A-RU 4	1/2	1/4	13/16	7/8	9/16	47
8 A-RU 6	1/2	3/8	13/16	7/8	11/16	48.5
10 A-RU 6	5/8	3/8	15/16	1	11/16	49.3
10 A-RU 8	5/8	1/2	15/16	1	7/8	52
12 A-RU 4	3/4	1/4	1-1/16	1-1/8	9/16	49.3
12 A-RU 6	3/4	3/8	1-1/16	1-1/8	11/16	50.8
12 A-RU 8	3/4	1/2	1-1/16	1-1/8	7/8	53.6
12 A-RU 10	3/4	5/8	1-1/16	1-1/8	1	53.6
16 A-RU 8	1	1/2	1-3/8	1-1/2	7/8	63.3
16 A-RU 12	1	3/4	1-3/8	1-1/2	1-1/8	62.8



where quality matters

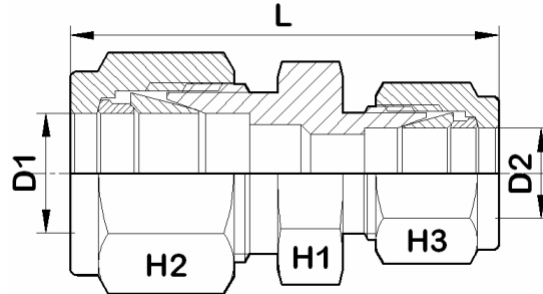
APURVA ENTERPRISES

7, Vijay Estate, Rajawadi, Ghatkopar (E),
Mumbai - 400077, Maharashtra, India.

Ph. No.:- 91-022-2344 3348 Fax:- 91-022-2341 4216.

E-mail:- apurvaenterprises@gmail.com
apurvaenterprises@hotmail.com

Reducing Union



For Metric Tubes

Apurva Code	D1	D2	H1	H2	H3	L
3 A-RU 2	3	2	12	12	12	35.5
6 A-RU 2	6	2	14	14	12	38.6
6 A-RU 3	6	3	14	14	12	38.6
6 A-RU 4	6	4	14	14	12	39.5
8 A-RU 6	8	6	15	16	14	42.3
10 A-RU 6	10	6	18	19	14	44.5
10 A-RU 8	10	8	18	19	16	45
12 A-RU 6	12	6	22	22	14	47
12 A-RU 8	12	8	22	22	16	47.8
12 A-RU 10	12	10	22	22	19	48.7
16 A-RU 10	16	10	24	25	19	49.5
16 A-RU 12	16	12	24	25	22	52
18 A-RU 12	18	12	27	30	22	53.5
25 A-RU 18	25	18	35	38	30	61
25 A-RU 20	25	20	35	38	32	62.5

NOTE: Reducing Union to connect Fractional Tube to Metric Tube or vice versa are available on request.